

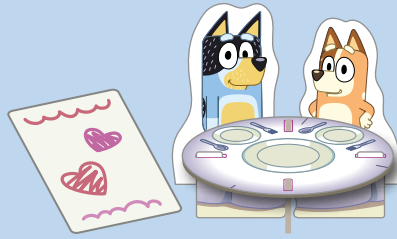
BLUEY FANCY RESTAURANT Game

CONTENTS

- 1 3D table
- 24 Bluey waiter cards
- 24 Bingo chef cards
- 1 menu board
- 1 Dad character and stand
- 1 Mum character and stand



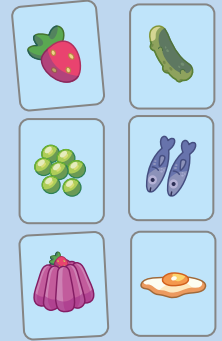
SETTING UP THE GAME



Assemble the table and put it in the centre then assemble Mum and Dad and sit them at the table. Put the menu board next to it.



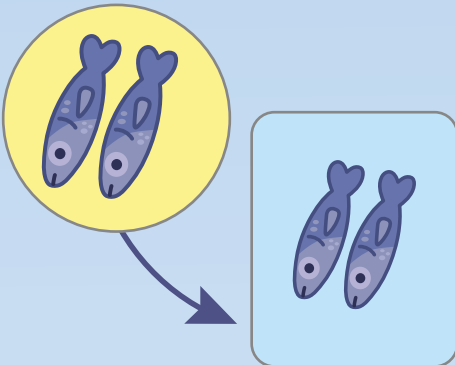
Spread all the Bingo chef cards face down in the centre.



Each player takes six Bluey waiter cards and puts them face up in front of them.

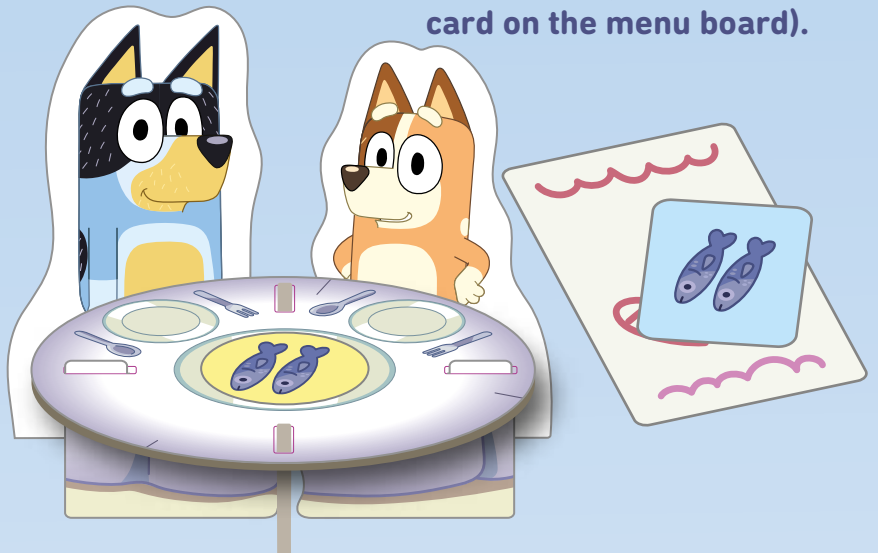
1 TO PLAY

The youngest player starts. Turn over a chef card and see if it matches any of your waiter cards.



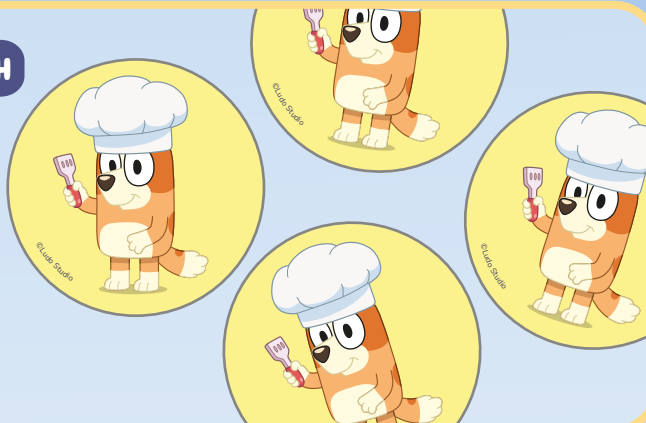
2 IF THE CARD MATCHES

If the card matches one of yours, put it onto Mum and Dad's table (and the waiter card on the menu board).



3 IF THE CARD DOESN'T MATCH

If the chef card you turned over doesn't match any of the cards in front of you, return it, face down to the table.



4 THE WINNER

The winner is the first player to match all of their cards!